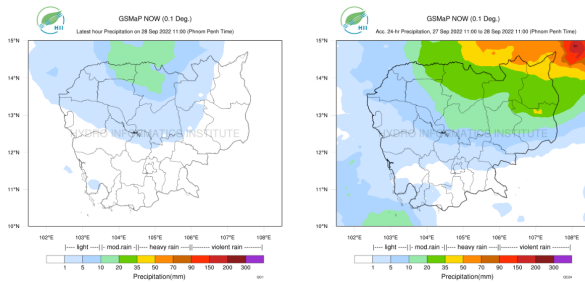


# Cambodia Weather Forecast and Monitoring

This webpage contains specific information for Cambodian weather monitoring and forecasting with the following details:

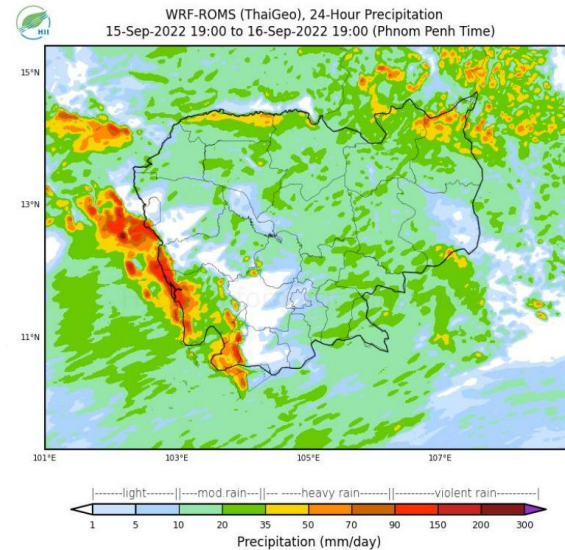
1

## Observed Rainfall Monitoring (0.1-deg GMap Now)



2

## 7-day Rainfall Forecast (Coupled WRF-ROMS Model)

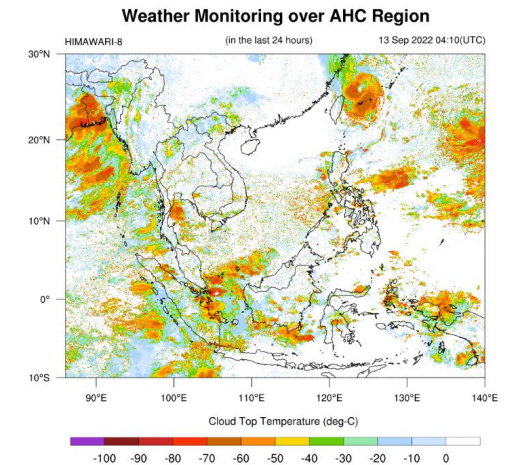


Version: 04.01.C320505.20220403

initial date 13-Sep-2022 19:00 (Phnom Penh Time)

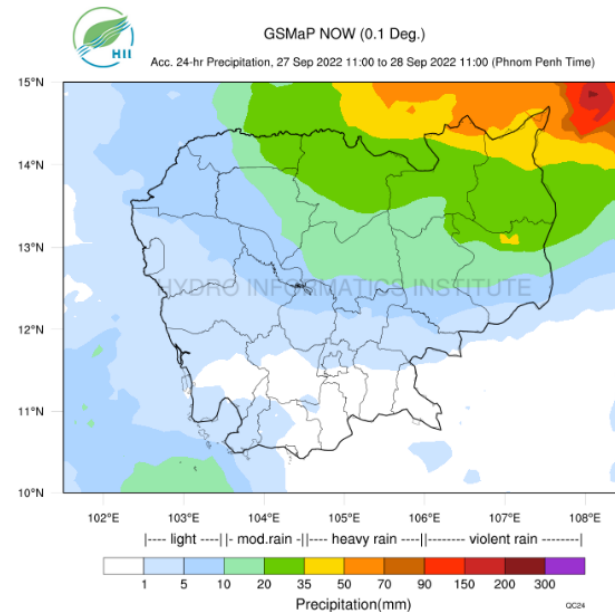
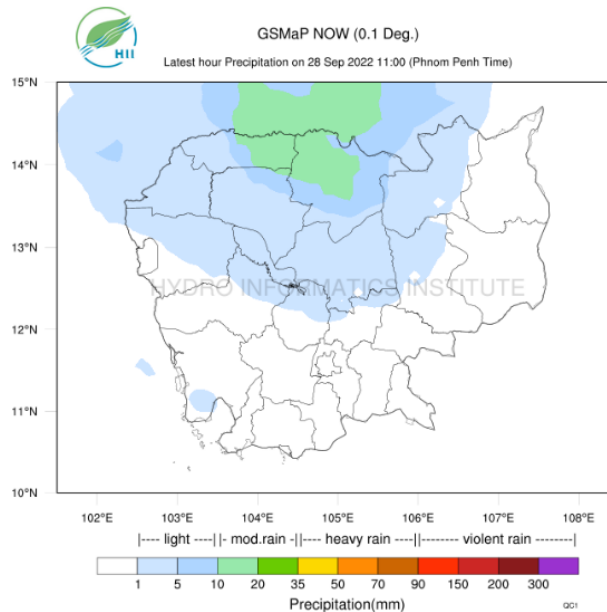
3

## Cloud Top Temperature (HIMAWARI-8) Weather monitoring for ASEAN



# Cambodia Weather Forecast and Monitoring

## Observed Rainfall Monitoring (0.1-deg GSMap Now)



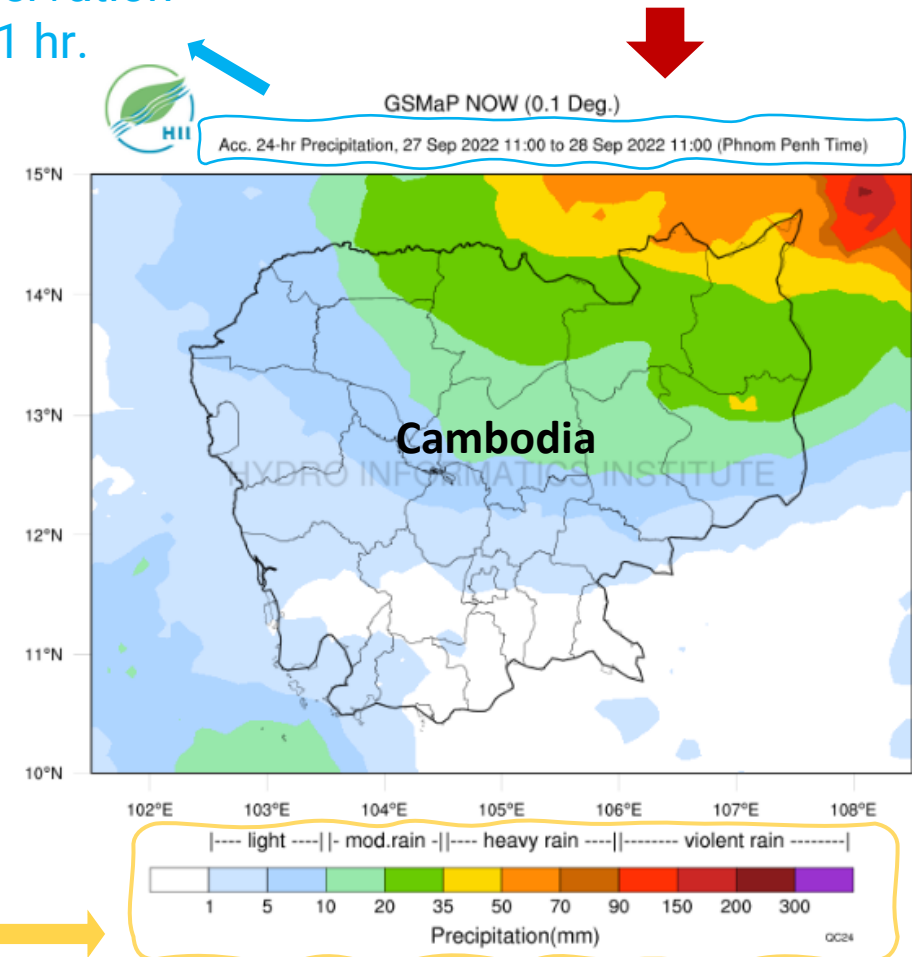
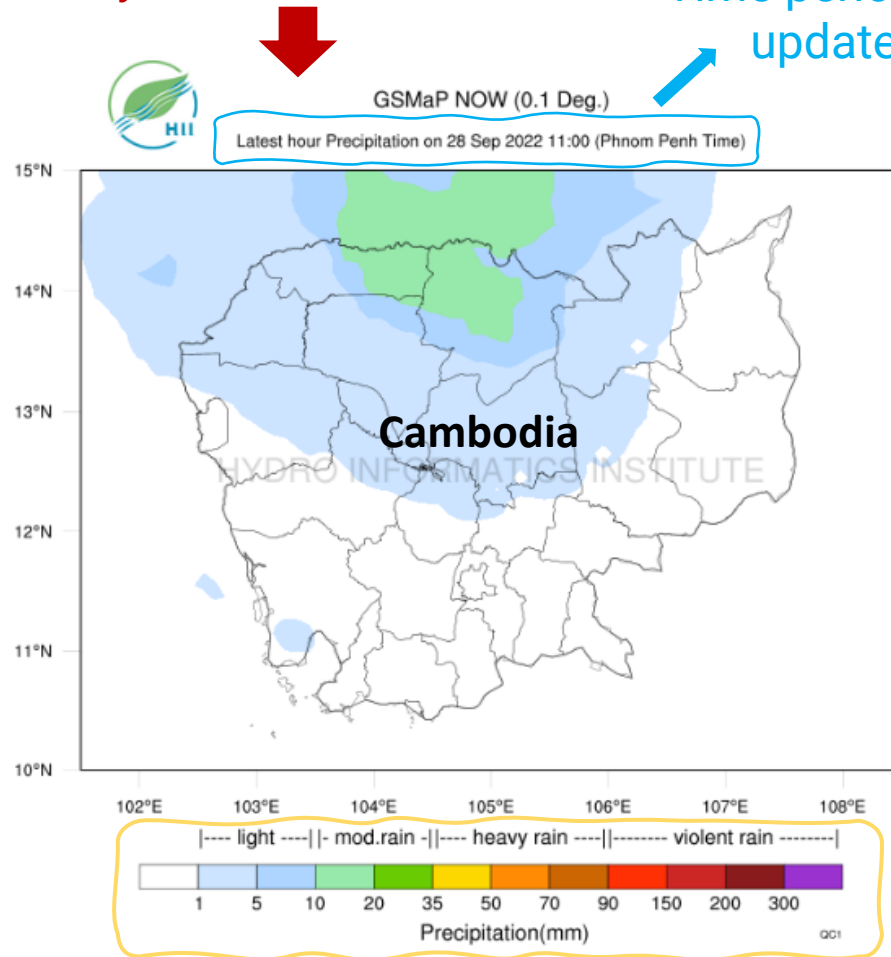
- Collaboration between Japan Aerospace Exploration Agency (JAXA) and Hydro-Informatics Institute (HII) Thailand
- Global Satellite Mapping of Precipitation (GSMaP) provides global hourly accumulated rainfall with 0.1\*0.1 degree solution
- GSMaP shows time period of accumulated rainfall observation: every 1-hr (left) and every 24-hr (right)
- 3-hour latency from the based observation e.g., the result of 6 pm.'s information will be updated on the 9 pm. image

# Observed Rainfall Monitoring (0.1-deg GSMap Now)

This map shows hourly accumulated rainfall

Time period of observation updates every 1 hr.

This map shows 24-hr accumulated rainfall

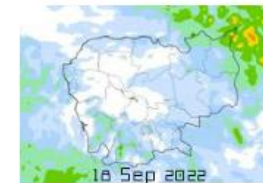
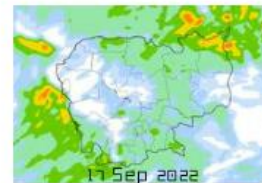
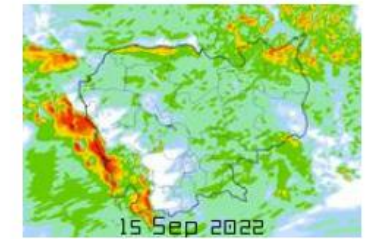
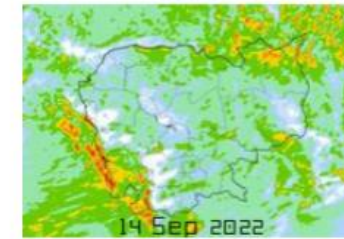
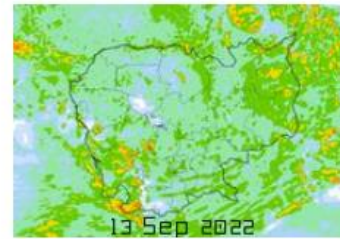


Light Moderate Heavy Violent  
<10 mm 10 – 35 mm 35 – 90 mm >95 mm

# Cambodia Weather Forecast and Monitoring

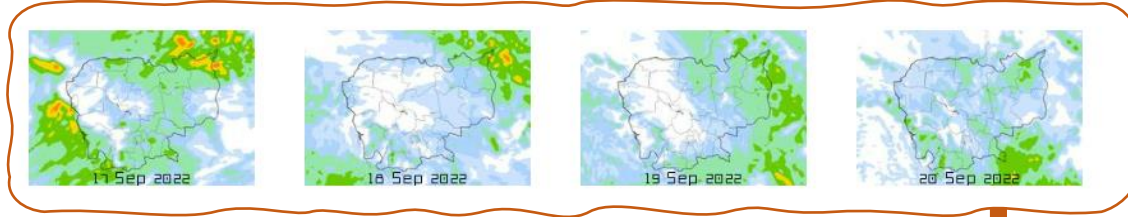
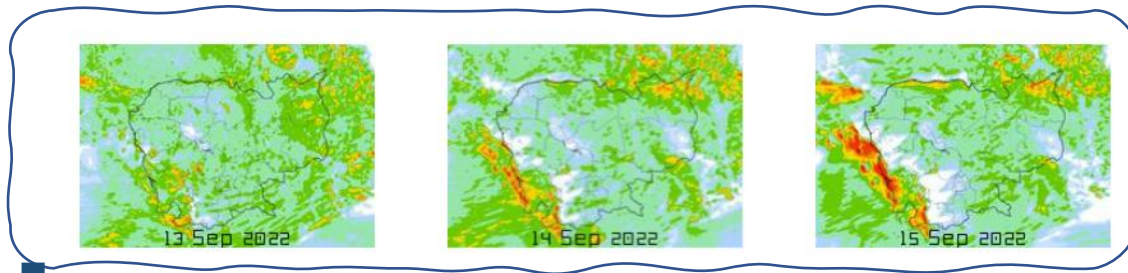
## 7-day Rainfall Forecast (Coupled WRF-ROMS Model)

- The combination of Weather Research and Forecasting (WRF) and Regional Ocean Model System (ROMS) models to represent a more realistic of rainfall phenomena and their interaction
- WRF-ROMS forecast shows 7-day Rainfall Forecast over Cambodia
- The model forecast is issued twice a day by Hydro-Informatics Institute (HII) for the initial condition at 00 UTC and 12 UTC.



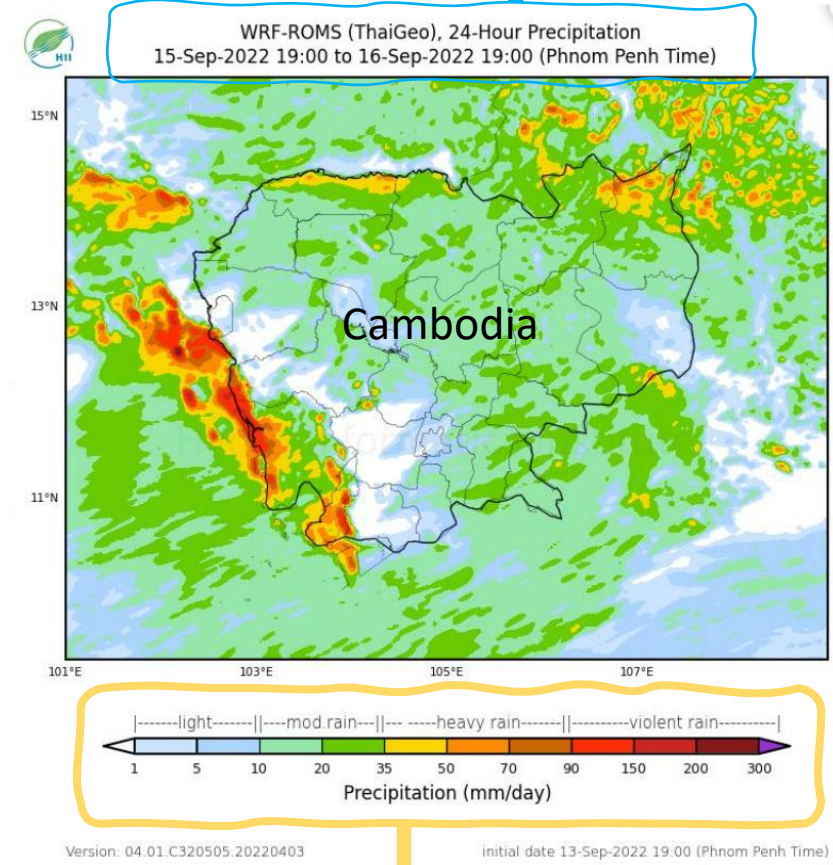
# 7-day Rainfall Forecast (Coupled WRF-ROMS Model)

Time period of forecasting  
in Phnom Penh Time



Day 1 – 3 forecast  
spatial resolution 3\*3 km.

Day 4 – 7 forecast  
spatial resolution 9\*9 km.

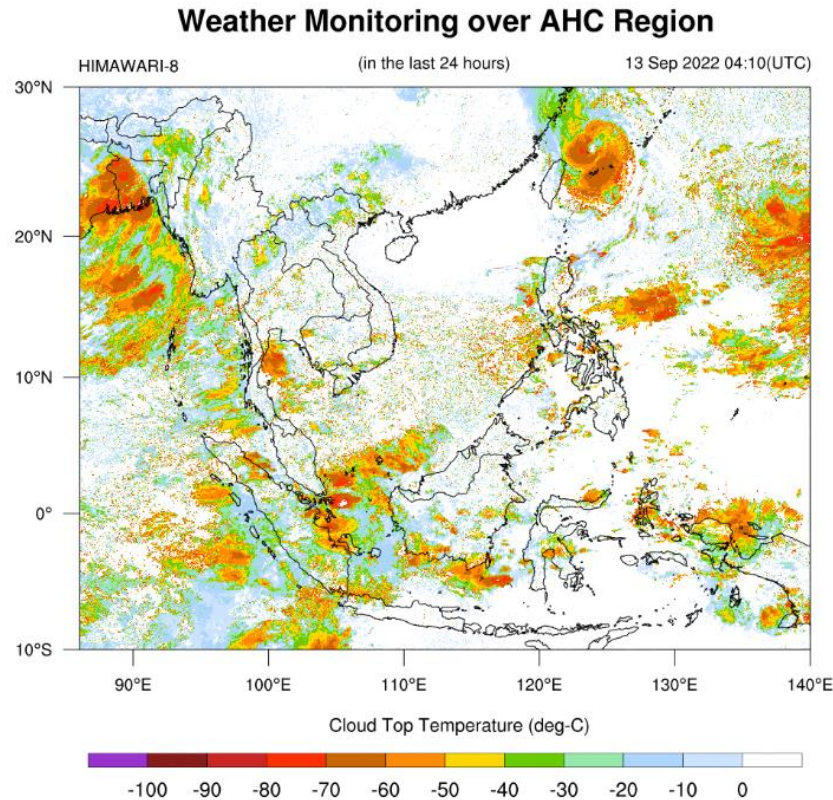


Rain intensity following a 24-hr accumulated rainfall by  
Thai Meteorological Department (TMD)

<b>Light</b>	<b>Moderate</b>	<b>Heavy</b>	<b>Violent</b>
<10 mm	10 – 35 mm	35 – 90 mm	>95 mm

# Cambodia Weather Forecast and Monitoring

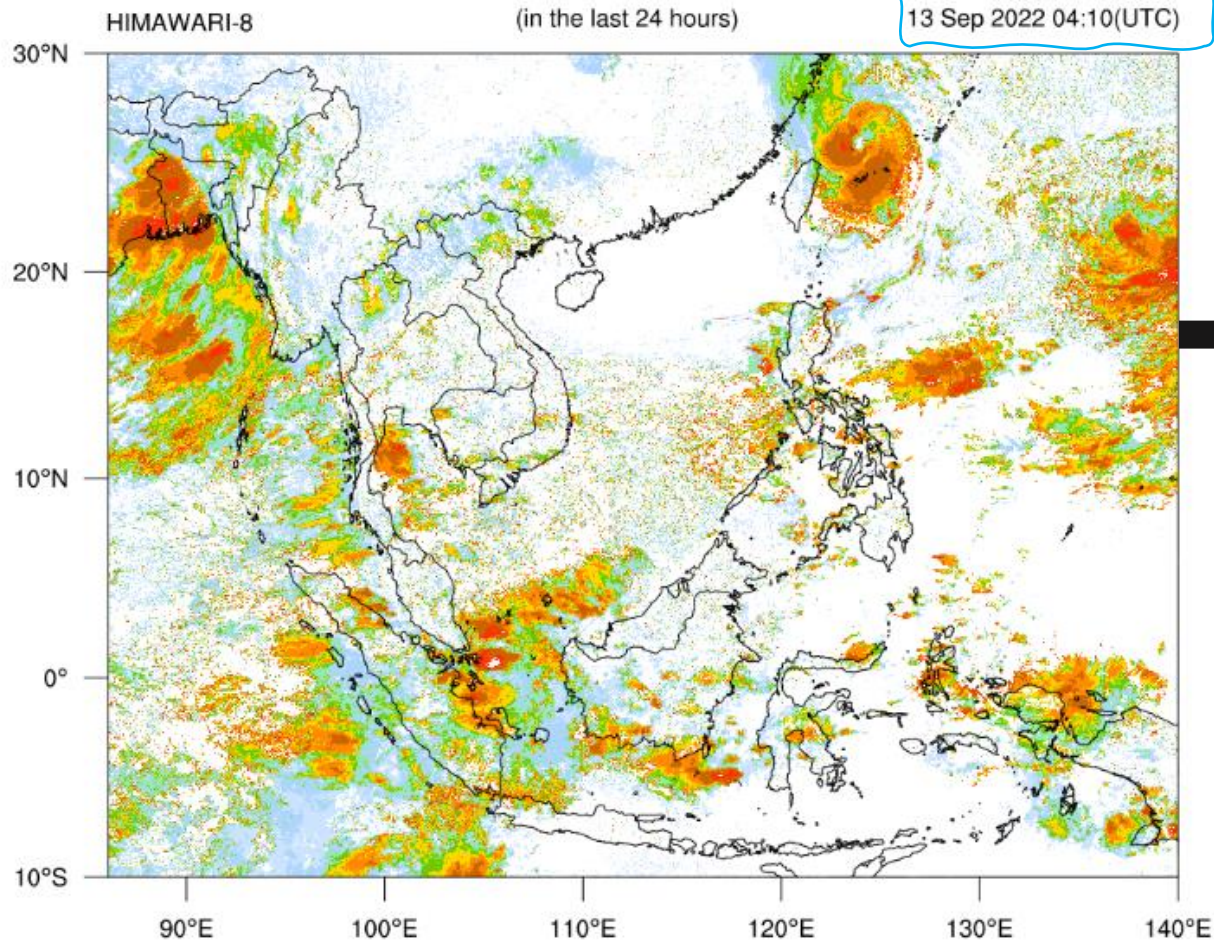
## Cloud Top Temperature (HIMAWARI-8) Weather monitoring for ASEAN



- Collaboration between Japan Aerospace Exploration Agency (JAXA) and Hydro-Informatics Institute (HII) Thailand
- Cloud Top Temperature (CTT) is a geophysical parameter data estimated from Himawari-8\* standard data
- The CTT is based on level-2 data of the Himawari's product with 2\*2 km resolution, every 10 min
- The plotted 10-min CTT map here is generated and updated by HII every hour

# Cloud Top Temperature (HIMAWARI-8)

## Weather Monitoring over AHC Region



Time period of forecasting  
changing every 10 minutes

The information is shown in ASEAN boundary  
in a GIF format

Cloud Top Temperature in Degree Celsius  
the higher magnitude, the more severe weather  
is expected